



STEAM PLANT
RESTAURANT & BREW PUB

EVENT GUIDE



STEAM PLANT RESTAURANT & BREW PUB

HISTORY

One of Spokane's most prominent skyline features, the Central Steam Heat Plant ("Steam Plant") is significant for its role in the evolution of the power industry. For 70 years, the Steam Plant provided heating to more than 300 central business district structures from Deaconess Hospital (now Multicare) on the South Hill to retail businesses on the south bank of the Spokane River.

Built in 1916, the Central Steam Heat Plant was made of steel-reinforced concrete and brick, 140 feet long and 83 feet wide. The northeast and northwest corners contain the bases of identical 225-foot tall smokestacks that have graced the Spokane skyline for more than 100 years.

By 1920, Washington Water Power (WWP) acquired the central heating system, and in 1986, the Steam Plant was closed. The high cost of repairing broken lines and cleaning up oil spills wasn't sustainable. The last boiler was shut down in December of that same year.

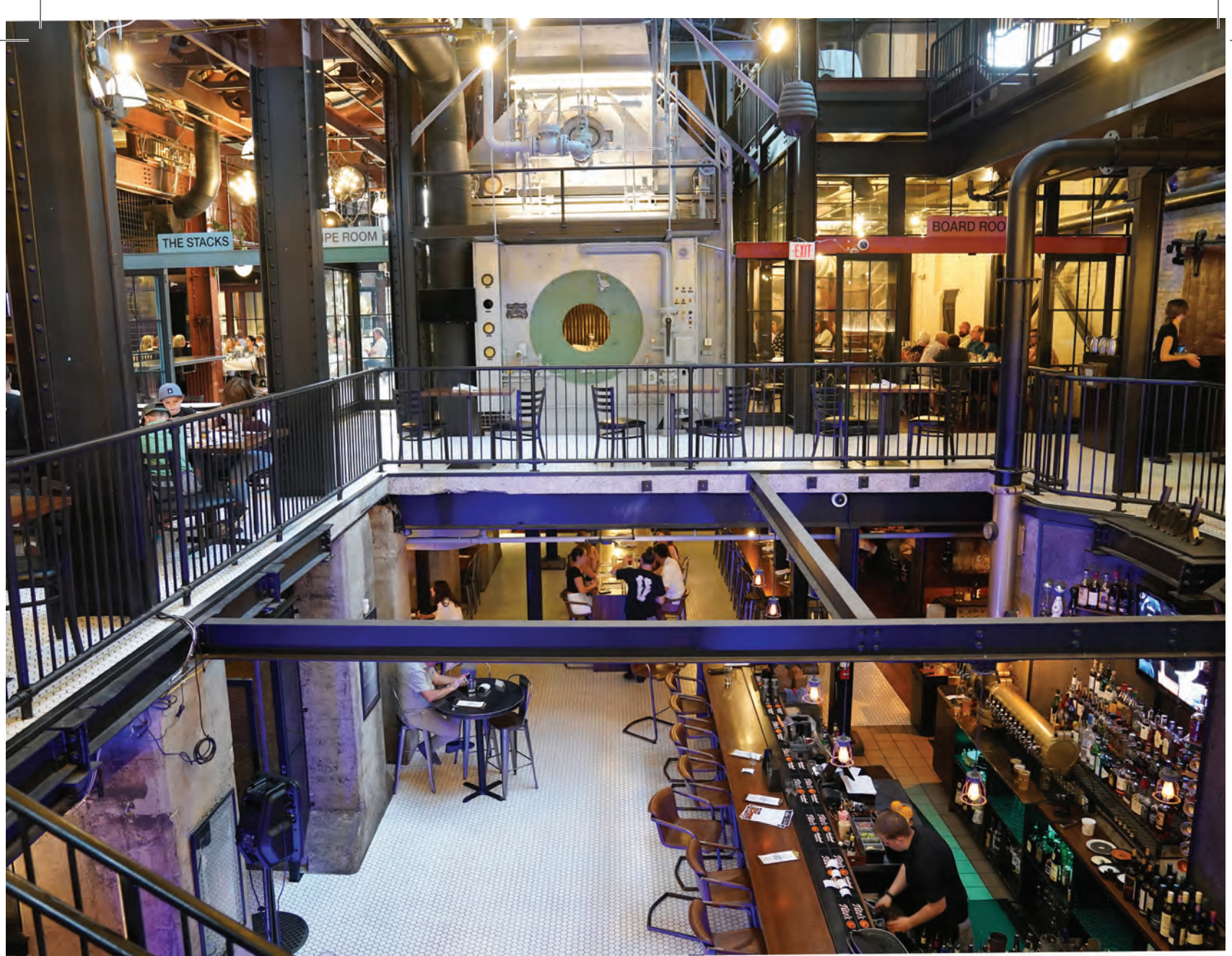
In the summer of 1996, ten years after closing, WWP (then known as Avista) formed the Steam Plant Square, LLC, and assembled a bold, yet visionary team that included a Spokane design-build firm specializing in historic renovations. By virtue of creative architectural design and carefully selected demolition, the old plant was transformed into a historical and architectural showcase.

The development team used the Steam Plant's unique infrastructure in the renovation, saving as much of the original machinery as possible within the rigid guidelines of historic renovation. Today, the Steam Plant is on the National Register of Historical Places.

More recently, two of the remaining massive steam boilers were converted into restaurant seating and a water feature/wishing well. One of the stacks continues to be a visitor attraction, while the other has been converted into a game room.



Bird's eye view of Spokane from the South Hill. Steam Plant stacks in center. Photo circa 1916.



EVENT SPACES

The Steam Plant Restaurant & Brew Pub offers one-of-a-kind event spaces that are a perfect blend of history and charm. Each space has its own sublime appeal that makes every event feel amazingly exclusive.

For special occasions and events, the Steam Plant will light the stacks in your chosen colors!

Depending upon your event, the number of guests, and special requests, there are different spaces from which to choose:

01. Rooftop
02. The Stacks
03. Game Room
04. Board Room
05. Wine Cellar
06. Boiler Room
07. Pipe Room

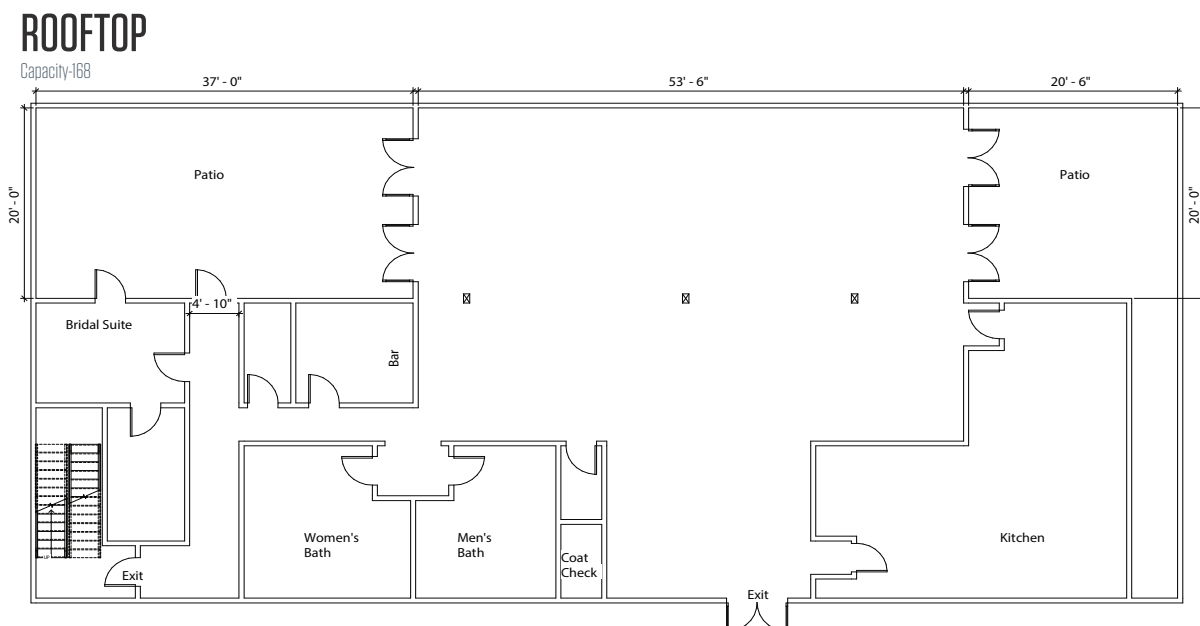
01. ROOFTOP

Our Rooftop event space, located on the third floor of the Seehorn Lang building off Lincoln Street, has outdoor patios on both sides of the building. The north patio has casual seating and bar access, along with a breathtaking view of the smokestacks. The south patio has tables and chairs with a stunning view of the South Hill. The entire space accommodates up to 168 for a social gathering and 120 for a seated event. The Rooftop includes a private bridal suite. For special occasions, we light the stacks in the colors you choose.



FEATURES:

- Two outside patios
- Bridal room
- LED back lights (can be any color)
- Coat Room
- Bathrooms
- 5' Round 8-seat tables
- 2' Round cocktail tables
- 6' | 8' rectangle tables
- Variety of linen and napkin colors
- HD Smart TV
- Built-in sound system with microphone
- Built-in bar
- Outdoor fire fixtures
- Outdoor bistro lights



ROOF TOP

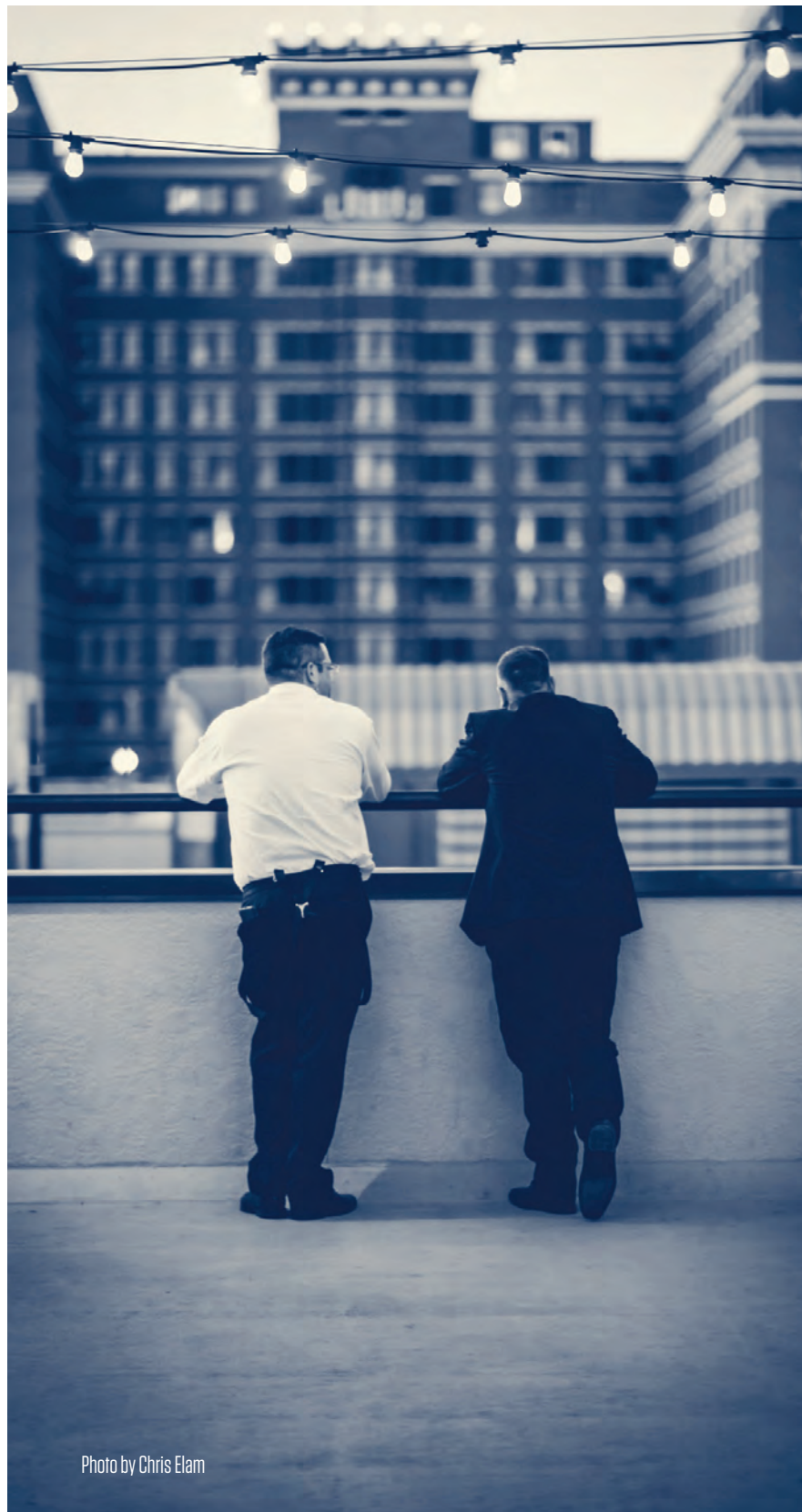


Photo by Chris Elam



ROOF TOP

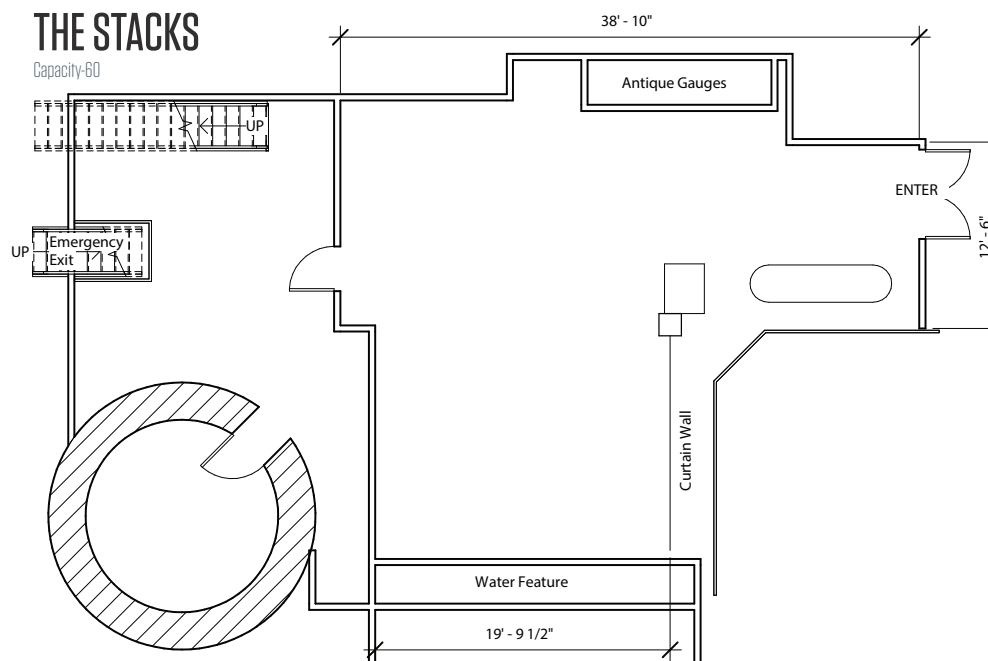


02. THE STACKS

The Stacks has a water feature that was one of the original steam distributions for the Steam Plant. It has a private entrance inside one of the steam stacks. Looking up you can see the true height of the stacks and how they add to the skyline of Spokane. The Stacks room is a private—yet airy space—that can accommodate up to 44 seated meals, and hors d'oeuvre parties for up to 60.

FEATURES

- Water feature
- LED back lights (can be any color)
- Exclusive access to the inside of a smoke stack
- 5' Round 8-seat tables
- 2' Round cocktail tables
- 6' | 8' rectangle tables
- Padded metal chairs
- Variety of linen and napkin colors
- HD Smart TV
- Built-in sound system with microphone
- Projector screen
- Full bar upon request



THE STACKS

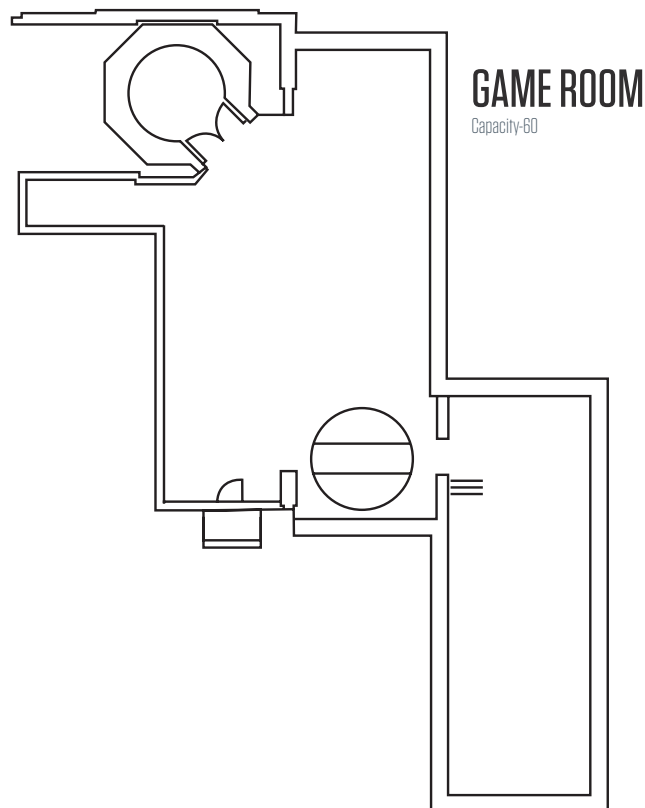


03. GAME ROOM

The Game Room, located on the second floor of the restaurant, can accommodate groups up to 45 for a sit-down meal and up to 60 for a reception. The 2,800 square foot space features a Shuffleboard and a Full Swing golf simulator. Simulator games include golf, football, soccer, zombie dodgeball, hunting, and more.

FEATURES:

- Full bar
- Full Swing Golf Simulator
- Shuffleboard
- Sound bar
- Projector screen
- Cable TV connectivity
- 5' Round 8-seat tables
- 2' Round cocktail tables
- 6' | 8' Rectangle tables
- Variety of linen and napkin colors
- Full bar upon request.
- Private Restrooms



GAME ROOM



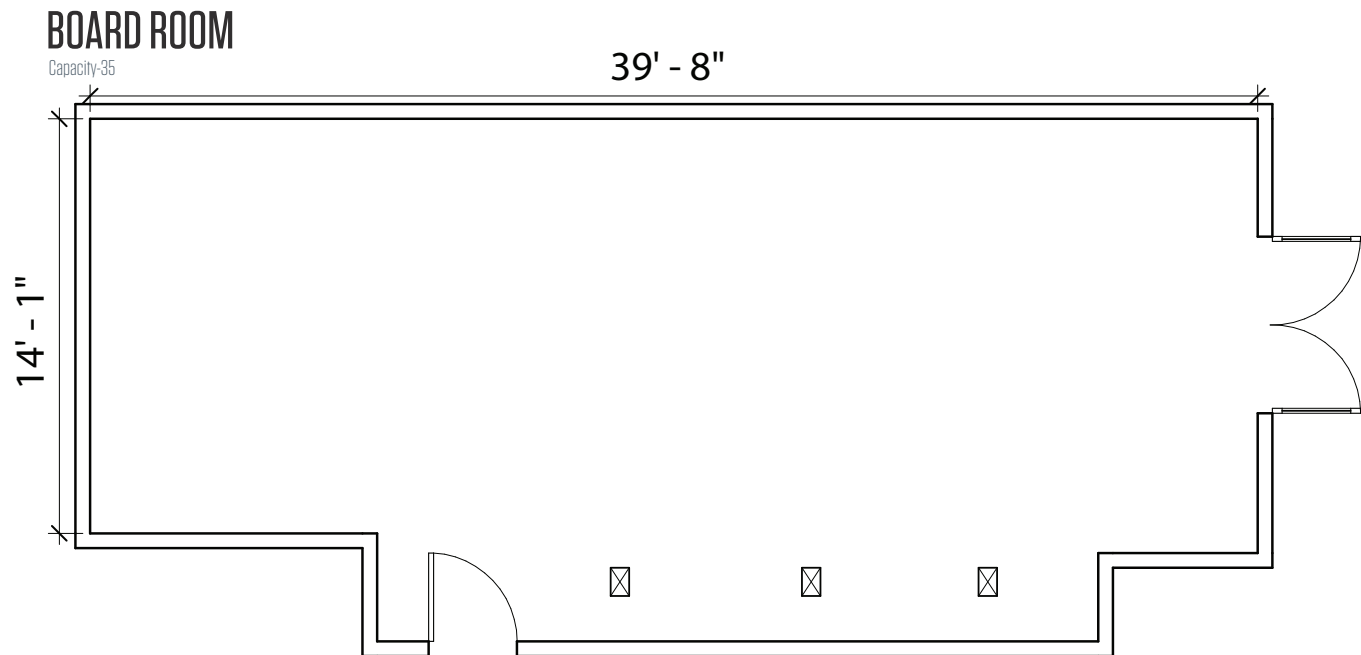
04. BOARD ROOM

The Board Room is a private dining room that is adjacent to the main dining area. It features rustic wood flooring and Steam Plant artistic imagery. The Board Room comfortably accommodates parties up to 35. Reservations for this event space are limited to Tuesday-Thursday evenings or daytime hours.

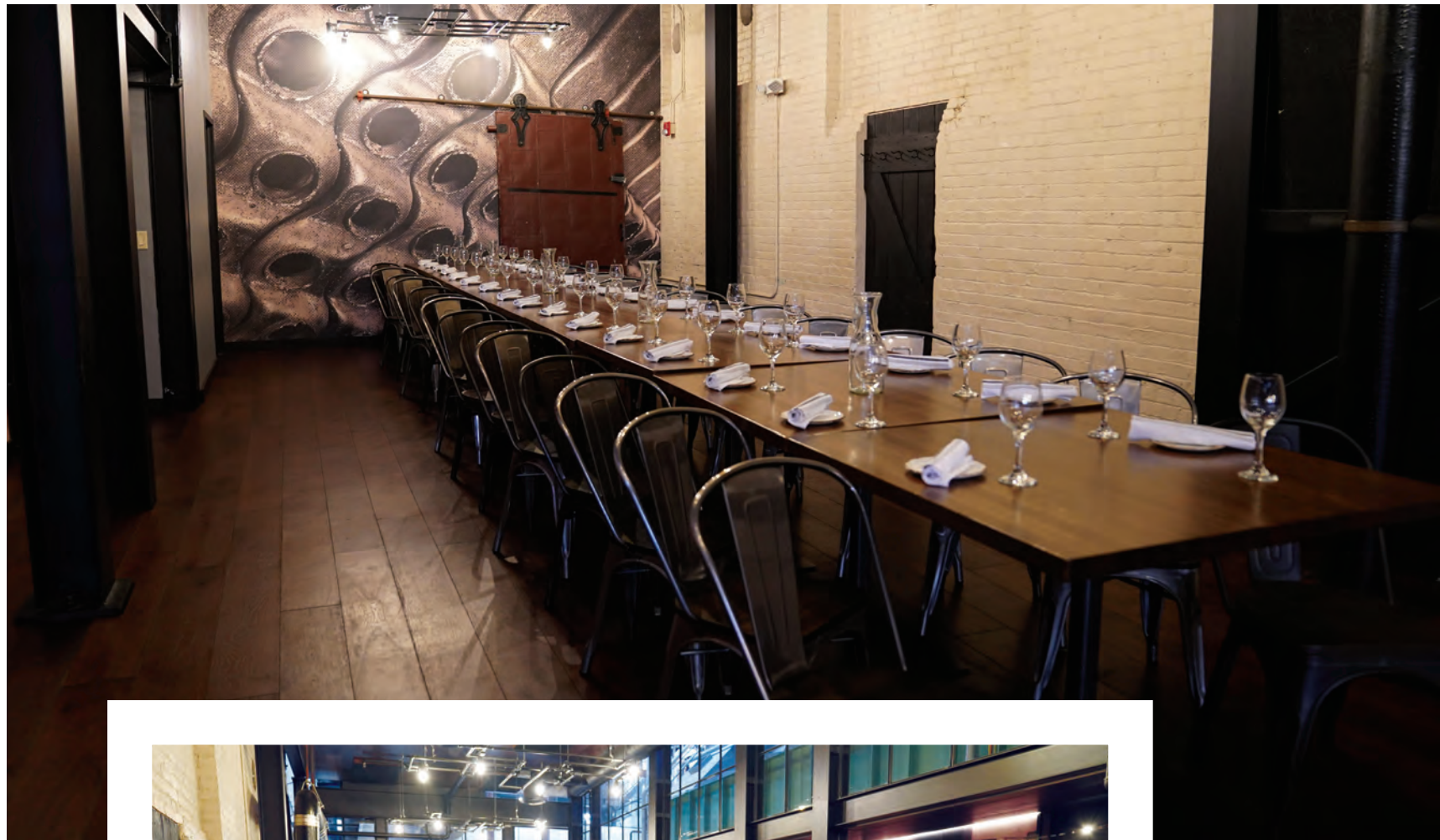


FEATURES:

- Wood tables
- Padded metal chairs
- Screen and projector
- Full bar upon request



BOARD ROOM



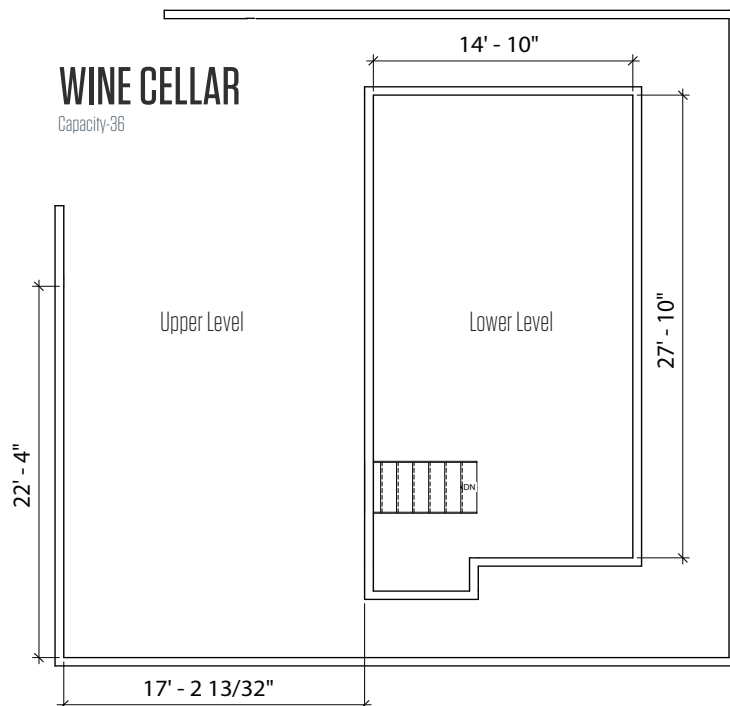
05. WINE CELLAR

The Wine Cellar is the perfect space to host a unique and memorable event. Located adjacent to the brew pub, the Wine Cellar will take you back in time to the days the Steam Plant was operational. The room has exposed pipes, mechanical hardware, and industrial stairs. There are two floors of event space. The upper floor has casual seating and a built-in steam fire fixture. The lower floor accommodates up to 18 guests for a sit-down dinner. Both floors combined accommodates 36 guests.

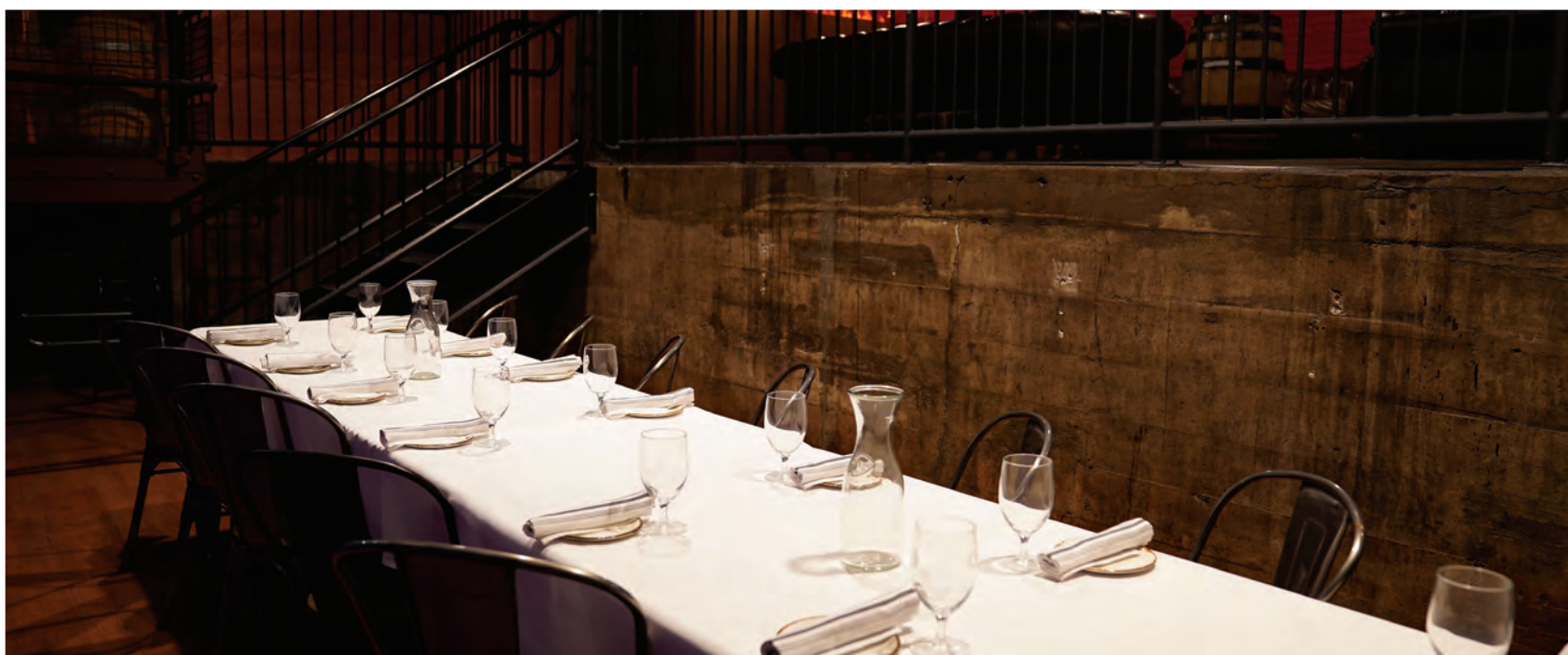


FEATURES:

- Leather couches
- Built-in steam fire fixture
- Barrel tables
- Rectangular tables
- 5' Round 8-seat tables
- 2' Round cocktail tables
- 6' | 8' rectangle tables
- Padded metal chairs
- Variety of linen and napkin colors
- 60" HD Smart TV
- Changeable LED lighting
- Full bar upon request



WINE CELLAR

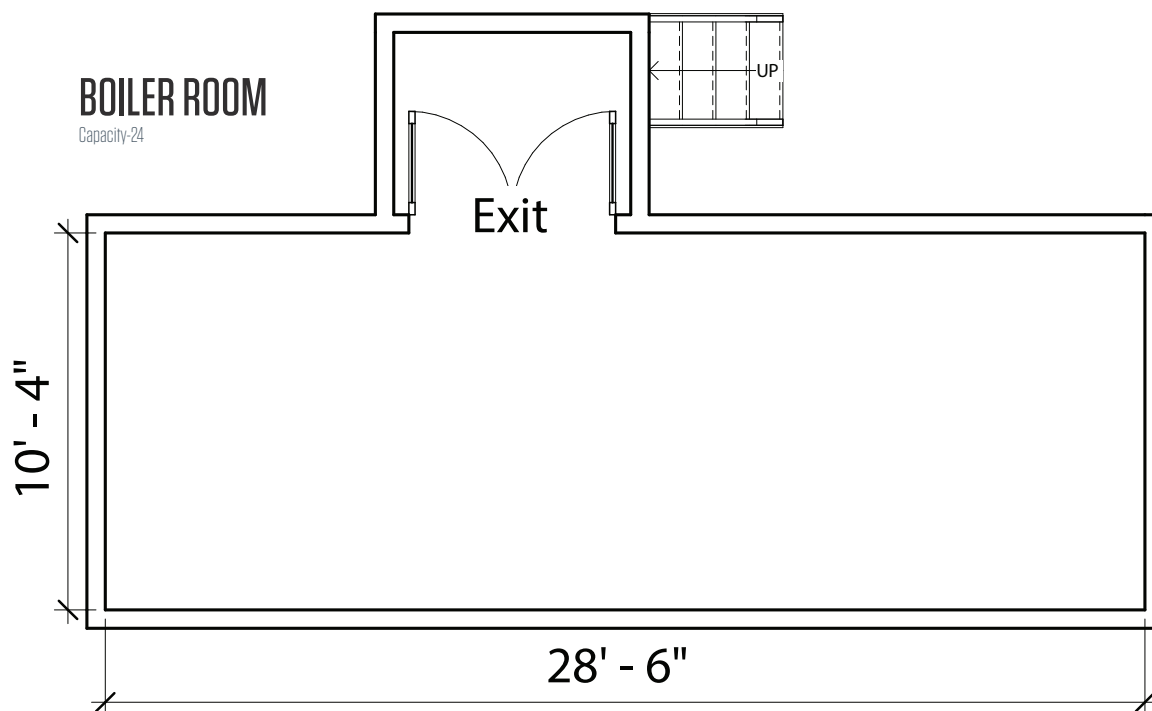


06. BOILER ROOM

No longer a boiler room, this cozy space is perfect for a small meeting or private dining parties up to 22.

FEATURES:

- Private room
- Rectangle table
- Wooden padded chairs
- 60" HD TV
- Changeable LED lighting



BOILER ROOM

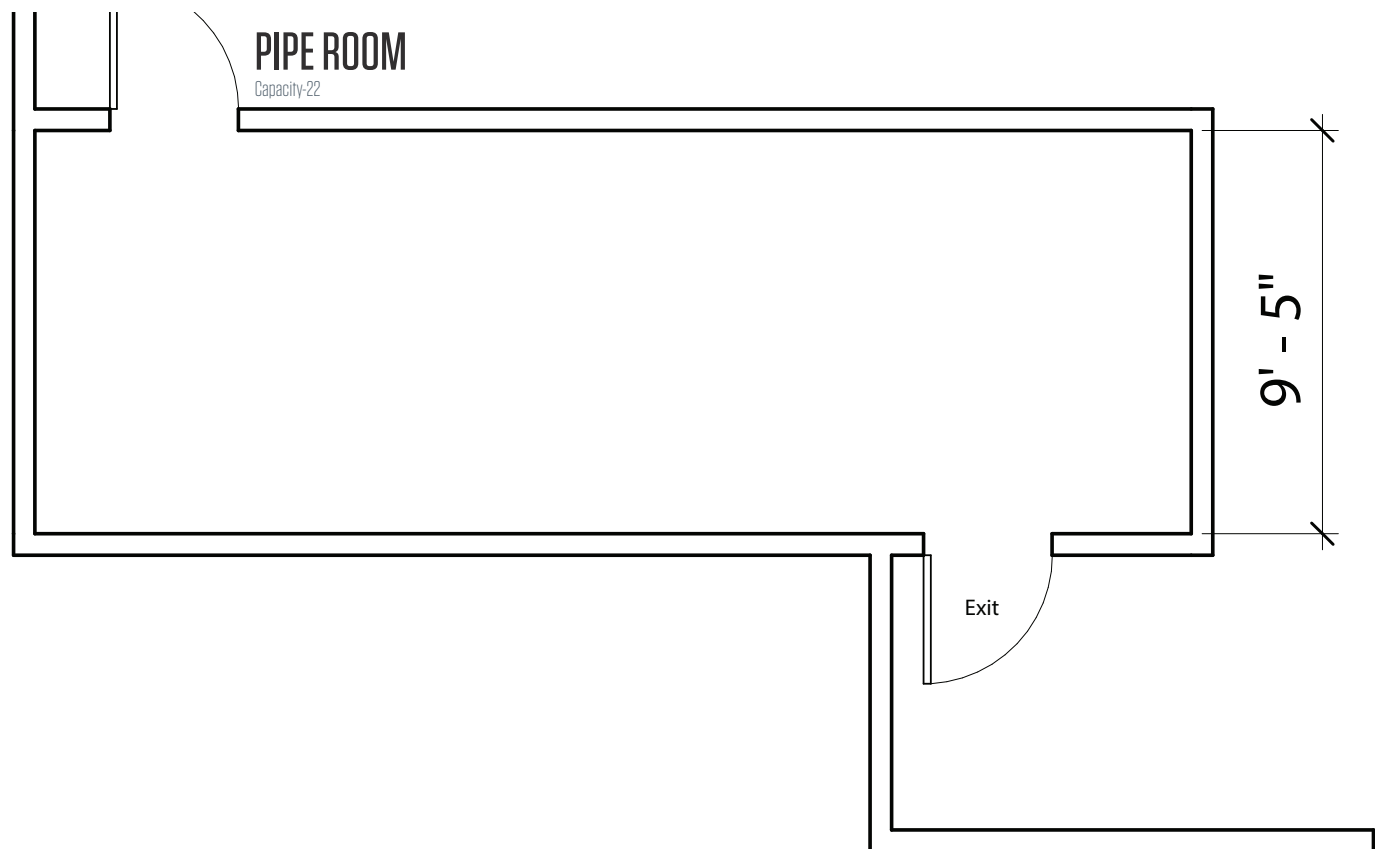
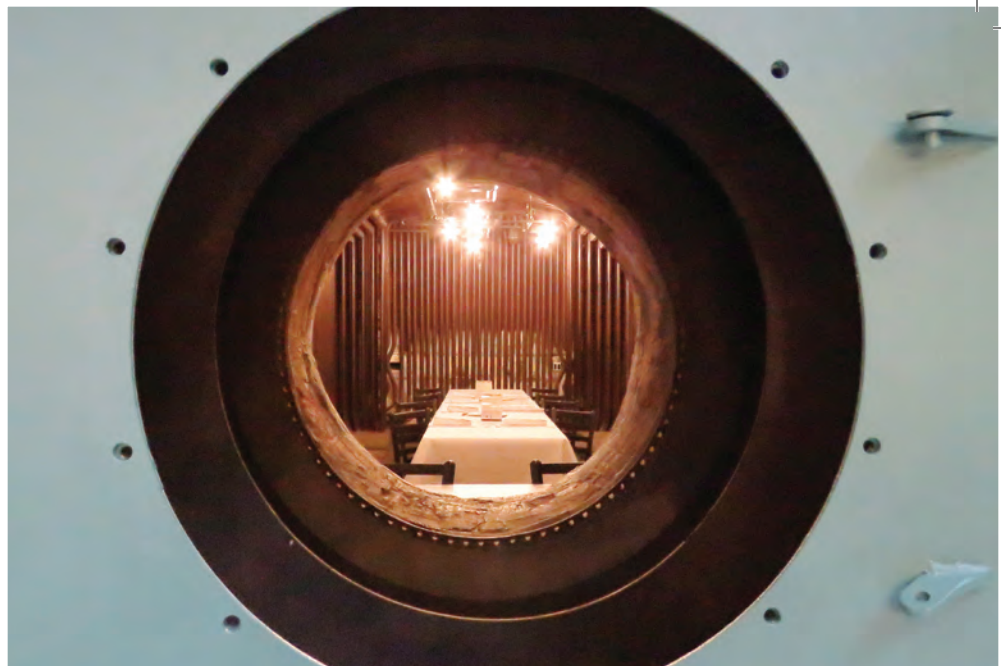


07. PIPE ROOM

The Pipe Room has thousands of small copper pipes that flow into the entire room. Although many of the pipes have been cut to provide texture, the room feels welcoming and warm.

FEATURES:

- Private room
- House sound
- Rectangle table
- Projector & Screen



PIPE ROOM



STEAM PLANT WEDDINGS

CONGRATULATIONS ON YOUR ENGAGEMENT!

The Rooftop is a one-of-a-kind location to host your special day. The unique architecture of the room, access to two outdoor patios, skylight views, a bridal ready room and built-in bar make this a great spot for your celebration. The room has plenty of space for round tables for seating and cocktail tables for mingling. Depending on the time of year you are looking to host your wedding, our North Patio can accommodate up to 80 guests for a ceremony. Our Stacks room (located in the historic Steam Plant Restaurant) can accommodate up to 100 set for a ceremony, with the guests proceeding up to the Rooftop for the reception.



STEAM PLANT WEDDINGS

Photo by Romancing Belle



Rachael + Josh Photography

STEAM PLANT WEDDINGS



Photo by Chris Elam

STEAM PLANT CATERING



CATERING TO PERFECTION

The Steam Plant Restaurant & Brew Pub is the exclusive caterer for the event center. Our skilled chefs have years of experience and stay up to date on the latest culinary trends. From hors d'oeuvres to plated meals, our chefs

can curate the perfect menu for your event. Our culinary team can accommodate food allergies and special dietary requests. For groups under 22, there is an option to order from restaurant menus on-site.

STEAM PLANT BAR SERVICE



Photo by Chris Elam



CHEERS!

The Steam Plant Restaurant & Brew Pub provides a full bar with draft and bottled beers, house and premium wines, and a variety of spirits. The Grain Shed Brewery has partnered with the Steam Plant to brew in-house and bring you locally crafted beer. Selection for bar service includes a hosted bar (all drink costs paid by host), a partially hosted bar (portion of the drink costs

paid by host), a no-host bar (guests purchase their own drinks), or no bar service.

Bar policies are in place to comply with state laws concerning alcohol consumption and service for the safety and care of guests, employees, and facilities of the venue. Bar services are intended to compliment events, not become the main event.

Our unique accommodations offer much more than a place to sleep. With vibrant art, great service, and modern amenities, Ruby Hospitality's properties transform a stay into an experience. Guests choose us when they are seeking service, style, and value. Enjoy a discount at Ruby Hospitality hotels with your event venue rental. For discount codes please contact becky@rubyhospitality.com.

STEAM PLANT HOTEL

123 S Post St. | Spokane, WA 99201
(509) 290-5209 | steamplanthotel.com

Located in downtown Spokane, the Steam Plant Hotel is just one block east from the Steam Plant Restaurant & Brew Pub. The Steam Plant Hotel is a casual venue and offers a free breakfast, a workout room, and bikes to ride around town. This hotel is dog-friendly. Outdoor murals and a video of a dancer makes the Steam Plant Hotel eclectic and inspiring.



HOTEL RUBY

901 W 1st Ave. | Spokane, WA 99201
(509) 747-1041 | hotelrubyspokane.com

The Hotel Ruby is less than two city blocks north from the Steam Plant Restaurant & Brew Pub on the corner of Lincoln Street and First Avenue. At Hotel Ruby guests may relax in the Sapphire Lounge before falling into one of our custom-made beds!



MONTVALE HOTEL

1005 W. 1st Ave. | Spokane, WA 99201
(509) 624-1518 | montvalespokane.com

The Montvale Hotel is one city block north and two city blocks west from the Steam Plant Restaurant & Brew Pub. There, you will experience the warmth and old-world charm of the hotel. Spokane's oldest boutique hotel offers 36 unique and luxurious rooms. Nestled in the vibrant Entertainment District of downtown Spokane, it's a short walk to coffee shops, dining, shopping, and more.



RUBY RIVER HOTEL

700 N Division St. | Spokane, WA 99202
(509) 326-5577 | rubyriverrhotelspokane.com

Ruby River Hotel is Spokane's first river resort! Situated on eight acres along the Spokane River, the Ruby River Hotel features an on-site restaurant, playgrounds, pools, a dog park, and quick access to the Centennial Trail. With 241 guest rooms and meeting and event spaces available, Ruby River is a refreshing escape to nature within the city!







159 S Lincoln St. | Spokane, WA 99201
(509) 777-3900 | steamlantspokane.com
